

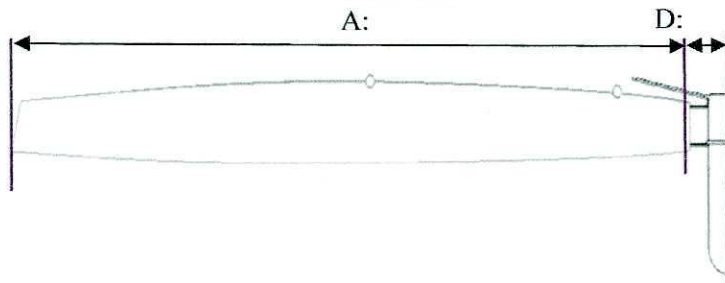
International A-Division Catamaran Measurement Certificate

Classic Hull Measurement Form

Refer current measurers guidelines when completing form. All measurements are in meters and to three decimal places.
www.a-cat.org

A: Overall Length - Rule D.4.1 (b)

Max	5,490
Actual	5,475



B: Overall Beam - Rule D.4.2 &

Max	2,300
Actual Hull	2,275
Actual Rudder	2,073
Actual Daggerboards	2,103

C: Minimum distance to centerline of all appendages in any position - Rule E.3

Min	0,750
Actual Rudder	1,031
Actual Daggerboards	1,047

D: Maximum distance of rudder assembly from stern - Rule E.5 (a)

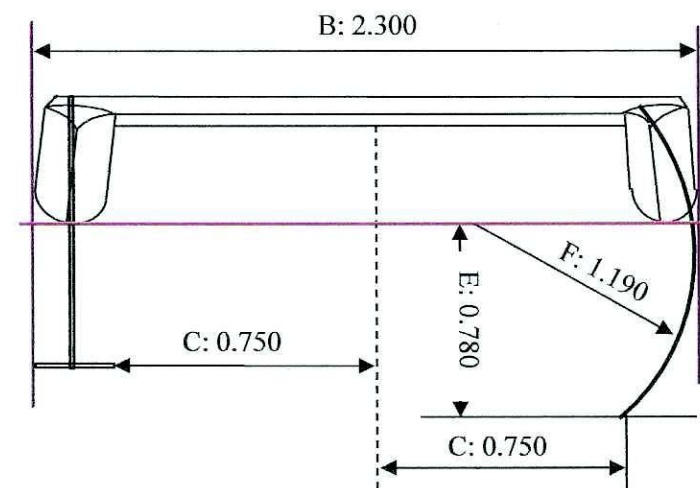
Max	0,300
Actual Rudder	0,240

E: Maximum daggerboard distance from lowest hull point-

Max	0,780
Actual Distance	0,650

F: Minimum daggerboard radius - Rule C.2.1.2 (c)

Min	1,190
Actual Radius	STRAIGHT



Hull Identification

Hull No.	BW2305	Builder	PULSAR France
ISAF/World Sailing Plaque N°	not applicable	Material	FIBERGLASS

Comments

FRA550 / Built in may 2004 / straight daggerboards and rudders without wiglets
TOTAL WEIGHT = 80.20 Kgs, class A hull BW2305 complete with RIBA mast SN° BW2305 and Brevin sail N°120668

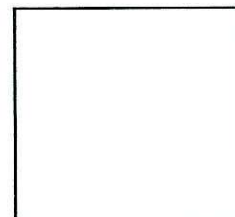
Measurers Declaration: I declare that I have measured hull and appendages and they comply with all class rules.

Date of Measurement: 20/08/2023

Measurer's Name: Benjamin WESTERFELD

Appointed by: AFCCA

Measurer's Signature:



Measurer's Stamp

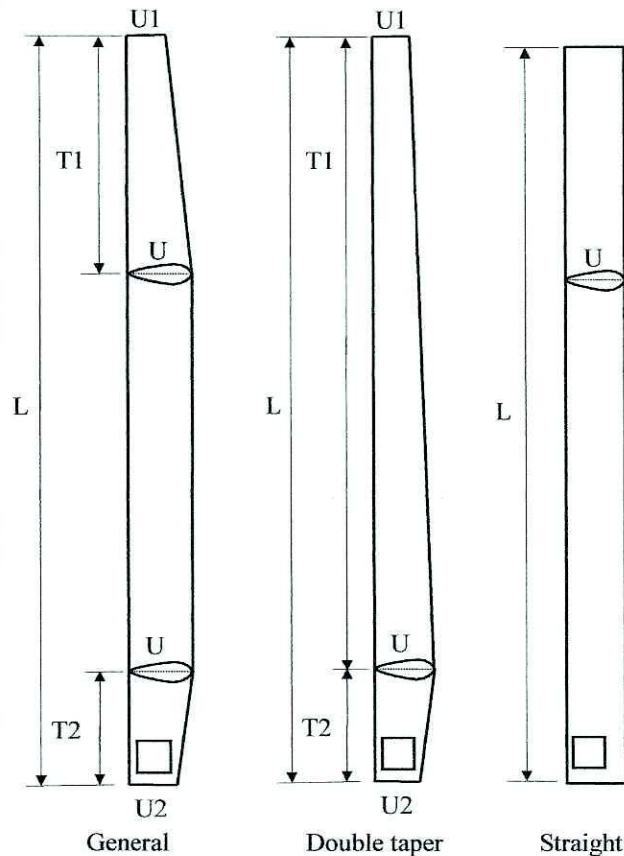
International A-Division Catamaran Measurement Certificate

Mast & Boom Measurement Form

Refer current measurers guidelines when completing form www.a-cat.org All measurements are in meters and to three decimal places.

Calculation of MA:

General mast formula $MA = U \times (L - T1 - T2) / 2 + T1 \times (U + U1) / 4 + T2 \times (U + U2) / 4$
 Double taper mast $MA = T1 \times (U + U1) / 4 + T2 \times (U + U2) / 4$
 Straight mast $MA = U \times L / 2$

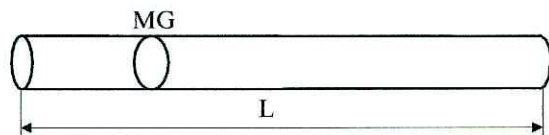


Mast (Is half of the surface area of the mast excluding top and bottom surface)	
L [m]	9,032
T1 [m]	2,266
T2 [m]	6,766
U [m]	0,335
U1 [m]	0,240
U2 [m]	0,335
MA [m ²]	1,459

Calculation of BA:
 $BA = 1/2 \times MG \times Lb$

Boom Measurement (Only required if the profile height is more than 1.5 the width)	
Length, Lb [m]	
Mean Girth, MG [m]	
Boom Area, BA [m²]	

Measurer to mark the following on bottom starboard side of mast.
 MA = *** Date *** SN = *** Signature ***



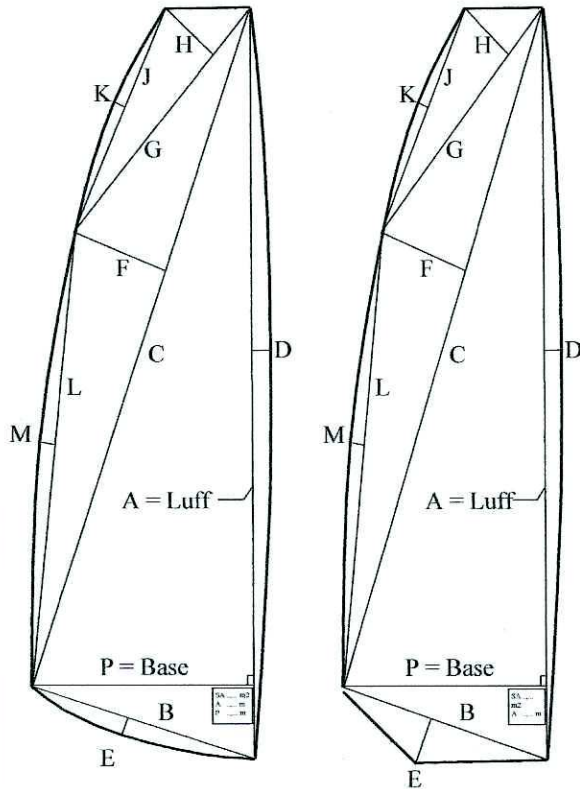
Mast Identification			
Serial N°	BW2305	Material	CARBON
Builder	RIBA		
Comments			
FRA550			

Measurers Declaration: I declare that I have measured this mast & boom and they comply with all the class rules.		<div style="border: 1px solid black; width: 100%; height: 100%;"></div> Measurer's Stamp
Date of Measurement:	20/08/2023	
Measurer's Name:	Benjamin Westerfeld	
Appointed by:	AFCCA	
Measurer's Signature:		

International A-Division Catamaran Measurement Certificate

Sail Measurement Form

Refer current measurers guidelines when completing form. All measurements are in meters and to three decimal places.
www.a-cat.org



Sail Number	FRA550		
Sail	Measure		Measure
Luff = A	8,690	H	0,000
D	0,098	J	0,000
C	8,508	K	0,000
F	0,756	L	8,340
G	0,775	M	0,074
Base = P	1,846	B	1,892
E	0,000		
Main Triangle	$1/2 (A \times P)$	8,021	
Luff Round	$2/3 (A \times D)$	0,568	
Foot Round	$2/3 (B \times E)$		
Foot Area	$1/2 (B \times E)$	0,000	<input checked="" type="checkbox"/>
Roach Area 1	$1/2 (C \times F)$	3,216	
Roach Area 2	$1/2 (H \times G)$	0,000	
Roach Area 3	$2/3 (J \times K)$	0,000	
Roach Area 4	$2/3 (L \times M)$	0,411	
Additional area (see comments)			
Sail Area	SA	12,216	[m2]

Total Rig Area of Mast & Sail cannot exceed 13.94 sqm

FOOT ROUND: $2/3(B \times E)$ FOOT AREA $1/2(B \times E)$ Choose the appropriate calculation depending on sail shape.

Measurer to mark the following on the starboard tack of sail SA = *** P = *** Date ***
A = *** Signature ***

Sail Button/ Serial No: 120668 **Sailmakers Name:** Brewins Sails

Comments: Comment and provide diagram in this section on any sail measurements that cannot be covered by above calculations. Show calculations applicable and transfer this figure to the section above, include negative sign(-) if the area is negative.

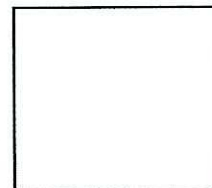
Measurers Declaration: I declare that I have measured this sail and it complies with all class rules.

Date of Measurement: 19/08/2023

Measurer's Name: Benjamin WESTERFELD

Appointed by: AFCCA

Measurer's Signature: 



Measurer's Stamp